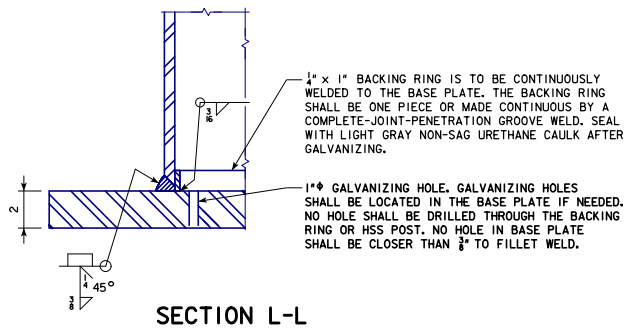
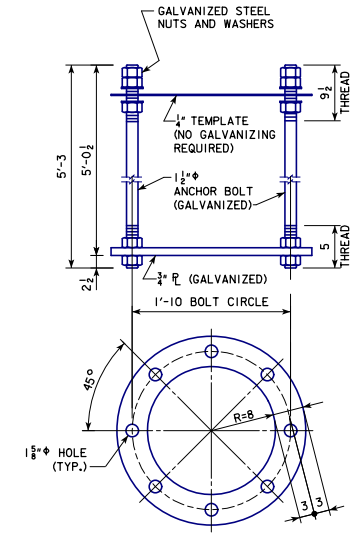
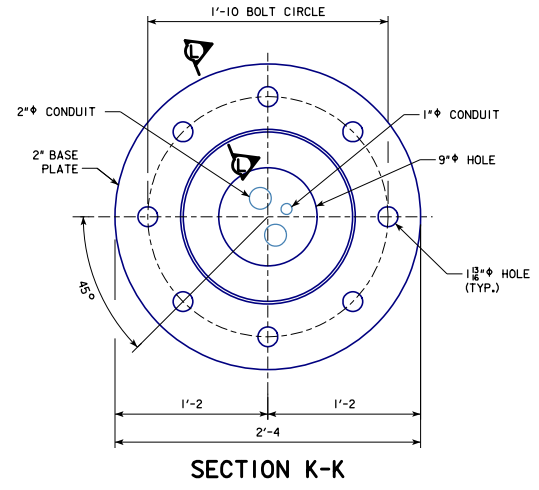


REVISED 04-2020: CHANGED "GALVANIZING VENT HOLE" TO "GALVANIZING HOLE" IN SECTION J-J TO REFLECT HOLE USE AS A GALVANIZING VENT HOLE AND/OR A GALVANIZING DRAIN HOLE. REVISED SECTION L-L, POST-TO-BASE-PLATE WELD SYMBOL TO SHOW A STANDARD-SIZED BACKING ELEMENT. CHANGED "FULL-PENETRATION GROOVE WELD" TO "COMPLETE-JOINT-PENETRATION GROOVE WELD" TO ROADSIDE MESSAGE SUPPORT SIGN - RDMS-04-13 - THIS SHEET ISSUED 04-2013.

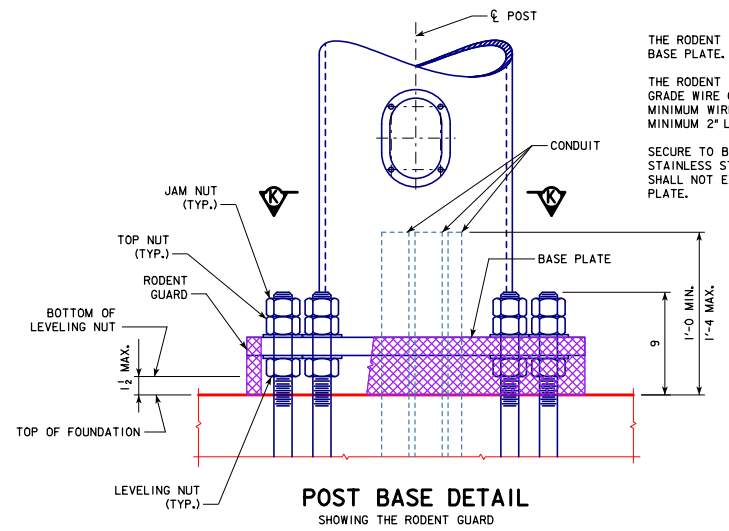


1/4" x 1" BACKING RING IS TO BE CONTINUOUSLY WELDED TO THE BASE PLATE. THE BACKING RING SHALL BE ONE PIECE OR MADE CONTINUOUS BY A COMPLETE-JOINT-PENETRATION GROOVE WELD. SEAL WITH LIGHT GRAY NON-SAG URETHANE CAULK AFTER GALVANIZING.

1/4" GALVANIZING HOLE. GALVANIZING HOLES SHALL BE LOCATED IN THE BASE PLATE IF NEEDED. NO HOLE SHALL BE DRILLED THROUGH THE BACKING RING OR HSS POST. NO HOLE IN BASE PLATE SHALL BE CLOSER THAN 3/8" TO FILLET WELD.



WEIGHT OF ONE ANCHOR BOLT ASSEMBLY: 421 LBS.
(INCLUDES TEMPLATE, EXCLUDES GALVANIZING WEIGHT)



THE RODENT GUARD SHALL BE PLACED AROUND THE BASE PLATE.

THE RODENT GUARD IS STAINLESS STEEL STANDARD GRADE WIRE CLOTH, 1" MAXIMUM OPENING WITH A MINIMUM WIRE DIAMETER OF AWG NO. 16 WITH A MINIMUM 2" LAP.

SECURE TO BASE PLATE AFTER ERECTION WITH 3/4" STAINLESS STEEL BANDING. THE RODENT GUARD SHALL NOT EXTEND ABOVE THE TOP OF THE BASE PLATE.

SEE STANDARD SHEET RDMS-05-13 FOR ANCHOR BOLT NOTES.

04-2020 LATEST REVISION DATE APPROVED BY BRIDGE ENGINEER	 STANDARD DESIGN ROADSIDE DYNAMIC MESSAGE SIGN (DMS) SUPPORT APRIL, 2013	
	SUPPORT POST BASE DETAILS	RDMS-04-13